

NPX100B

Specifications

Range (µm)	100
Footprint (mm)	100 x 100 x 23
Aperture (mm)	φ40
Material	Aluminum
Max Load (kg)	1

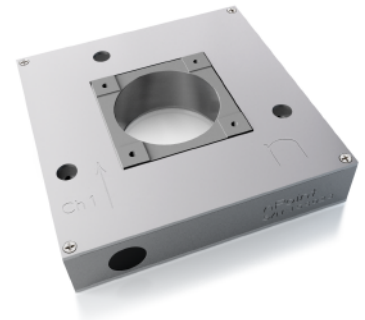
The NPX100B is a closed-loop single axis nanopositioner with 100um range of motion. It is specially designed for metrology applications. Its aperture allows for integration in optical microscopes.

Position Noise (nm)	0.3
Small Signal Settling Time (ms/1µm step)	5
Resonant Frequency (Hz, unloaded, typical)	900
Linearity Error (%)	0.03
Hysteresis (% , typical)	0.03

Application Examples

- Near-Field Scanning Optical Microscopy
- Scanning Probe Microscopy
- Optical Microscopy
- Lithography
- Nanometer-scale Manipulation
- Metrology

Part Number 3715159



Installation

